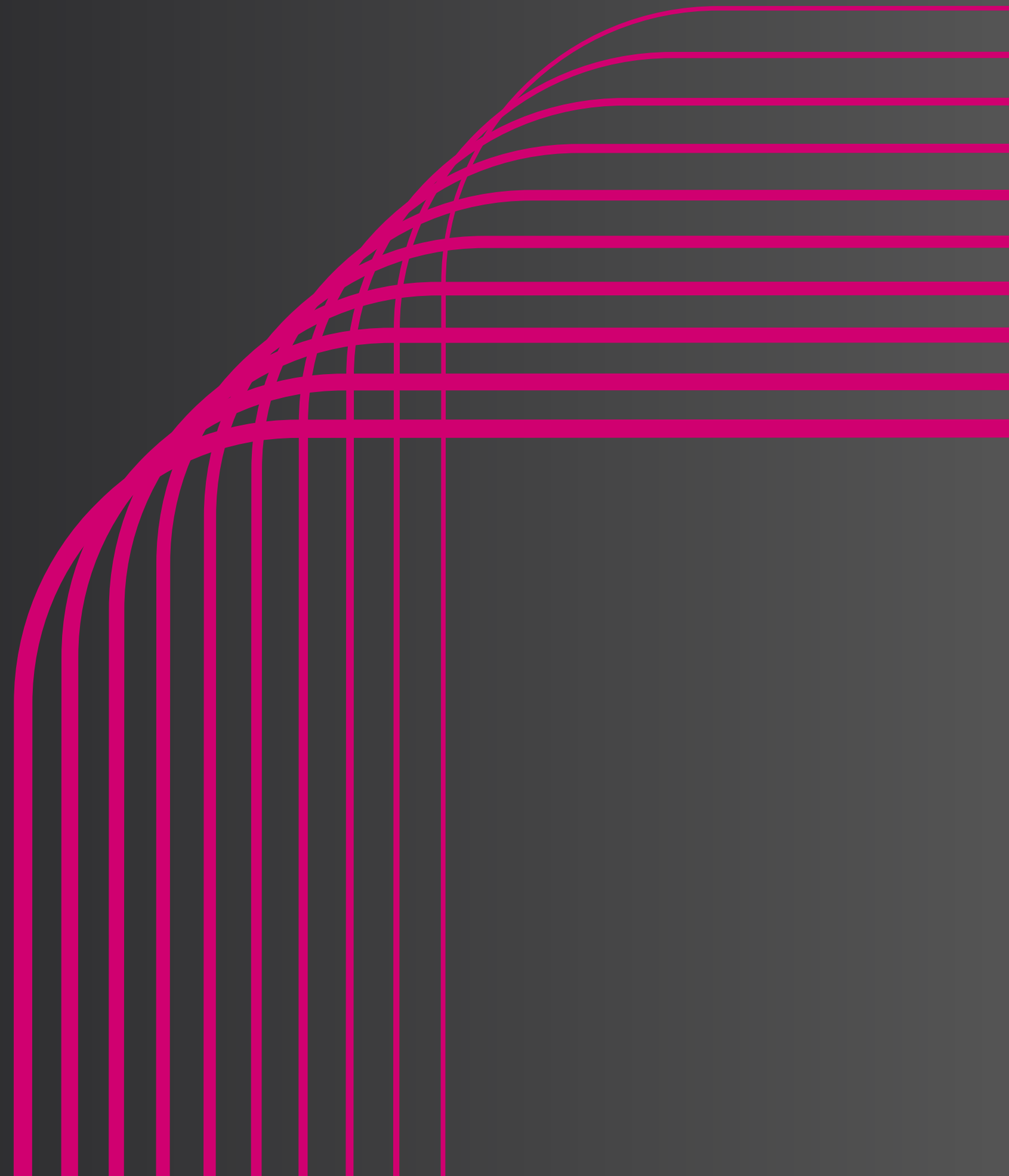


Trustible

AI Governance Year 2

AI Governance beyond policies, intake, and training

IAPP Global Summit 2026



About Trustible

Who We Are

Trustible is the leading AI governance platform enabling safe and compliant AI adoption. Our AI governance platform enables enterprises to identify, measure, and mitigate AI risk to accelerate AI adoption. The company is headquartered in the Washington D.C. area. For more information, visit trustible.ai.

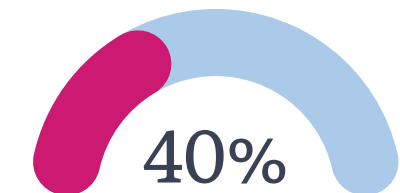
What We do

Responsible AI Governance Software & Solutions

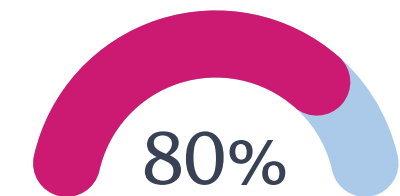
Whether you are building internal AI models, leveraging generative AI or using AI-enabled SaaS applications, Trustible™ enables your organization to manage and mitigate AI risk, build trust, and accelerate responsible AI development. Plus, align your efforts to regulatory frameworks like the EU AI Act, NIST AI RMF, or ISO 42001.

Customer Snapshot

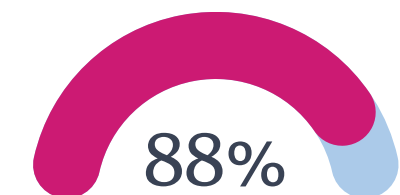
Percent of Trustible customers meeting these criteria



Fortune 500



Publicly Traded



Operate Globally

Panel Discussion



Andrew Gamino-Cheong

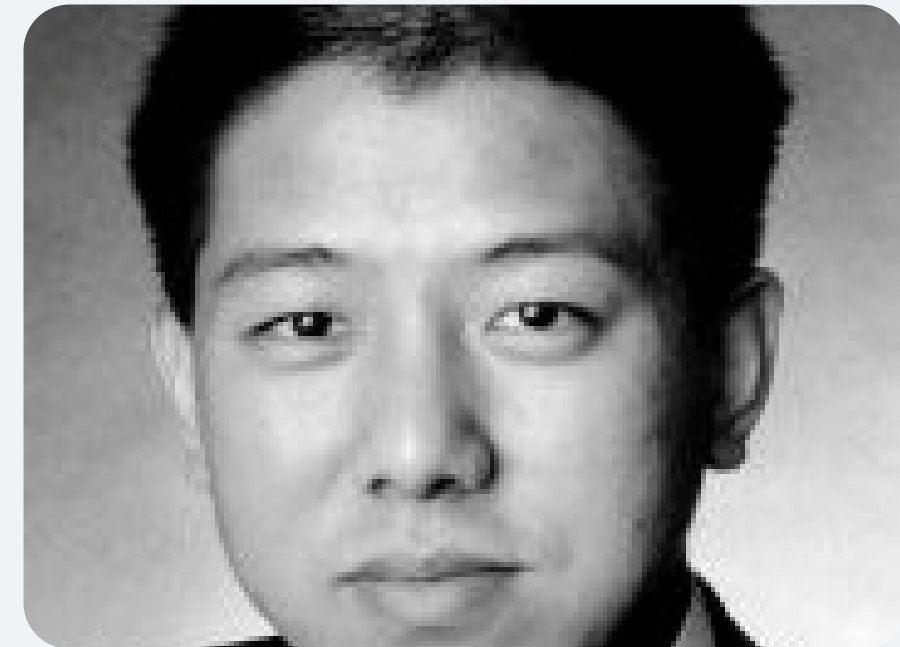
CTO & Co-Founder

Trustible



Kimberly Zink

Chief Privacy Officer



Derek Han

Partner, Cyber & Privacy



The Business Case for AI Governance

We likely don't have to convince you since you're here, but the metrics on investing in AI Governance are clear

3x

more likely to be an AI high performer

Organizations with strong governance leadership and oversight are 3x more likely to attribute >5% of EBIT to AI.

McKinsey State of AI, 2025

3.4x

more effective with governance platforms

Organizations deploying AI governance platforms achieve 3.4x higher governance effectiveness.

Gartner AI Governance, 2025

\$4.4M

average loss from AI-related risks

99% of organizations reported financial losses from AI-related risks; 64% lost more than \$1M.

EY Responsible AI Survey, 2025

This Conversation's Starting Point

What we assume you already have in place



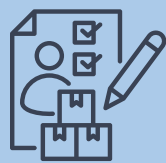
AI Policies are written



AI Literacy training implemented



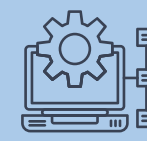
Use case intake process established



Initial risk / impact assessments done



Governance committee roles defined



Secure AI platforms created

What does AI Governance Year 2 entail?

Major Model Changes

Managing model deprecations, upgrades, and substantial modifications and knowing when to trigger a full reassessment.

Periodic Reviews

Establishing review cadences for high-risk systems, defining what gets reviewed, and who is involved.

Regulatory Updates

Analyzing new regulations against your AI portfolio and determining which systems are impacted.

Program Iteration

Evaluating your governance program's effectiveness, metrics, and readiness for agentic AI at scale.

Discussion

Major Model Changes

Scenario: Your organization's key AI system was built on GPT-4o, which is being deprecated. The vendor says to upgrade to GPT-5.3. What amount of governance do you do?

Considerations

- *Who is responsible for reading the system card of the new model?*
- *What kind of evaluations are you going to do?*
- *What happens if the new model's performance is less than the old?*
- *If Microsoft changes the model for Copilot, are you really going to redo a full assessment?*

Periodic Reviews

Scenario: It's been one year since your highest-risk AI system was deployed. Time for its first formal review. What does that process look like?

Considerations

- *Which use cases get periodic reviews?*
- *How heavy or light should reviews be?*
- *What would 'model drift' look like for a customer support chatbot?*
- *Who needs to be involved here?*

Discussion

Regulatory Updates

Scenario: The EU AI Act just got amended with new criteria for 'high risk' use cases and new compliance obligations. How do you assess its impact on your existing AI systems?

Considerations

- *If you have hundreds of use cases, how would you handle this?*
- *Which roles and teams need to be involved in this process?*

Research Insight: Nearly 7 in 10 businesses have difficulty understanding their obligations under the AI Act, and those with more uncertainty are measurably less likely to plan AI investments.

— IAPP EU Digital Laws Report, 2025

Discussion

AI Governance Program Iteration


Scenario: ISO 42001 requires regular evaluations of your AI Governance program. It's been a year since you launched your program and now it's time for a review. What do you do?

Considerations


- *What are the key metrics of your program that you want to collect?*
- *Why those metrics, and how will you use them?*
- *How should you change your program to account for agentic AI?*
- *How will you handle the scale of agentic AI governance?*

Thank you!

 Website www.trustible.ai

 E-mail contact@trustible.ai

 LinkedIn <https://www.linkedin.com/company/trustible/>

 HQ address 1201 Wilson Blvd, Floor 25, Arlington, VA 22209

Trustible